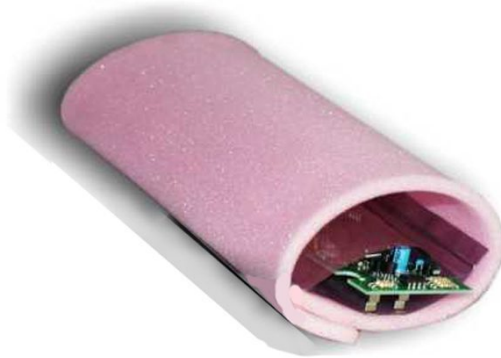


## ESD DISSIPATIVE SOFT PINK FOAM (1X1.5M, TH. 6MM)



SKU: 640285A



**ESD safe static dissipative soft foam, pink colour.**

Foams with customized dimensions (static dissipative or conductive) are available on request.

### Specifications

- Dimensions: **100 x 150 cm** - Thickness: **6 mm**
- Material: additivated PU - Density: 30 kg/m<sup>3</sup>
- RS: <math>10^{12}</math> Ohm.