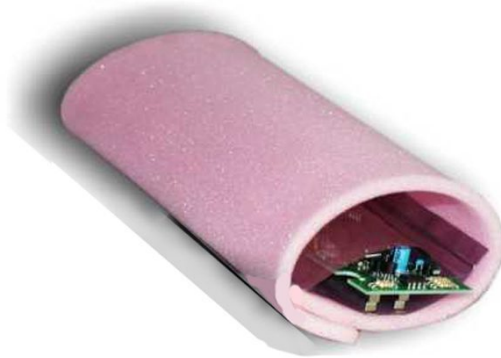
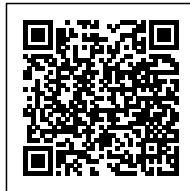


## ESD DISSIPATIVE SOFT PINK FOAM (1×1.5M, TH. 10MM)



SKU: 640286A



**ESD safe static dissipative soft foam**, pink colour.

Foams with customized dimensions (static dissipative or conductive) are available on request.

### Specifications

- Dimensions: **100 x 150 cm** – Thickness: **10 mm**
- Material: additivated PU – Density: 30 kg/m<sup>3</sup>
- RS: <math>10^{12}</math> Ohm.