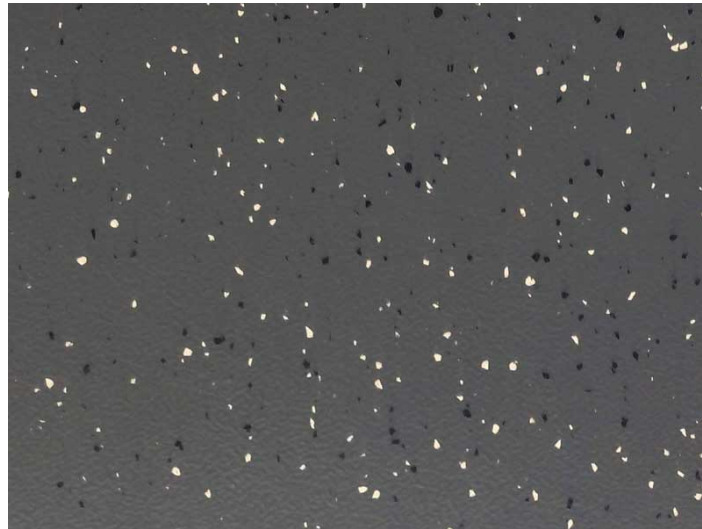
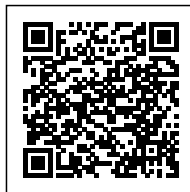


ESD FLOOR MAT QUICKSTAT DELUXE (1.22X10M, TH. 3.5MM)



SKU: 131818A



ESD FLOOR MAT QUICKSTAT DELUXE - 3.5MM

High quality ESD floor mat Quickstat Deluxe series, made of 2 calendered and vulcanized rubber layers (DIF **static-dissipative top layer**, ECF **conductive bottom layer**).

The top layer is made of a compound with interspersed multicoloured flecks of a maximum diameter equal to 2mm.

Specifications

- Dimensions: **1.22x10 m** - Thickness: **3.5mm**
- Colour: **Dark grey**
- Hardness (ISO 7619): 85 Shore A
- Resistance to a groundable point (EN 61340-4-1): $\leq 1 \times 10^9$ Ohm

Quickstat Deluxe ESD Mats

Quickstat ESD floor mats has an extremely easy, quick and cost-effective installation process.



Unlike most of ESD floor mats, their conductivity doesn't depend on the type of adhesive or on the installation process. In fact, thanks to the highly conductive lower side, Quickstat mats can be simply layed by using a common bi-adhesive tape (for small areas) or conductive glue, making possible an effective installation at extremely low costs.

A copper grid on the sub-floor is required for grounding.

ATTENTION: In case of gluing, the laying of Quickstat requires a humidity rising damp value under 2%.

Download TDS > [Quickstat Deluxe ESD Floor Mats TDS](#)